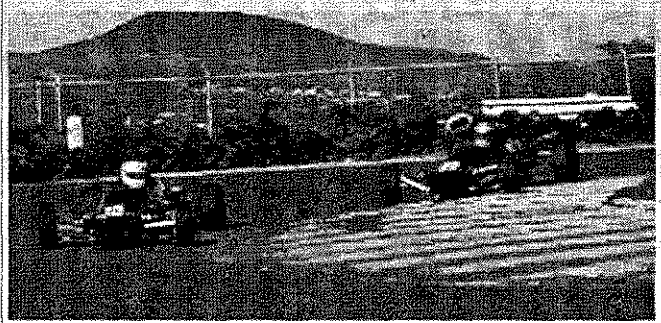


Reversal Of Fortunes: Hawaii's November Regional

(Continued from page 1)

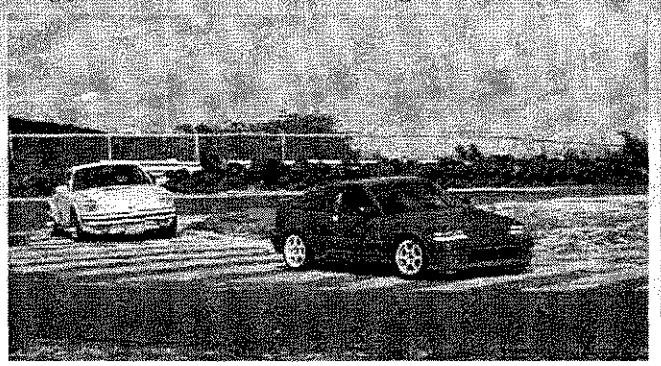
Steve Timpson and Dave Goto put on quite a show, here Timpson runs wide allowing Goto to take a look on the inside.



were the usual spins, spills and mishaps. Lee Guertler, the winner of the last year's final race, in his Datsun 240Z had a horrible start. In his fourth lap of practice, the gearshift lever broke and that was the end of his day. Next, Alan Zane in his Formula Ford went off into the bushes during practice. But fortunately, there was no harm to either the car or the driver. In another red flag incident, Ed Kemper in his Mustang did a nice, as they say at the airport, ground loop at the chicane closing the track for a short time. Qualifying saw the first three Formula Fords of Steve Timpson, Wes Aihara, and Dave Goto within a second of each other. About a second or so back were Stephen Hirasuna, Alan Zane, and newcomer Anders Nervell, who just completed last year's SCCA driver's school.

As has been the case, the first turn of lap one of the Formula race can be critical with such a tight field. As a result of the first turn jam up, Goto was able to get by both Timpson and Aihara, but within a lap or two was repossessed by Timpson also at turn one. Goto was initially able to draw up to Timpson a couple of times just before the reverse camber turn. But as the laps ran

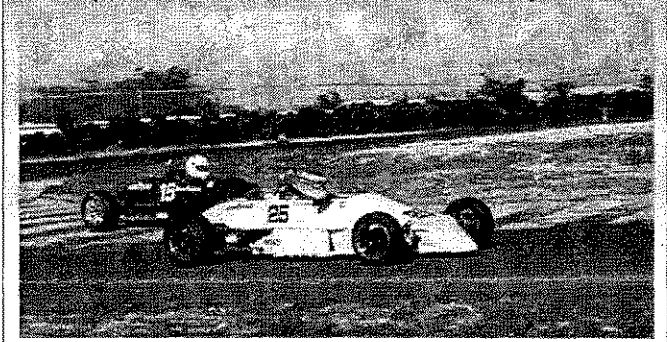
Aihara's CRX held down second place for about half the race, keeping Mishima at bay before settling for third due to a sour engine.



down, Goto faded with a broken engine mount and ultimately finishing 24 seconds back. Aihara, who raced in his Formula Ford and in the sedan race in his CRX, alternated between falling back and catching up, and ultimately finished right behind Goto. Meanwhile Zane and Hirasuna fought it out for 4th and 5th place. Our newcomer, Anders Nervell, was forced out in the fourth lap with a broken carburetor sync-link.

With Guertler out early, perennial closed wheel winner Scott Schulte had no real challenger to test his new, super tall, adjustable wing on his Porsche. He easily qualified first. The next two cars qualified with less

Timpson takes the inside line to pass Hirasuna on his way to another Formula Ford victory.



than a second apart--- Ron Mishima in his Porsche and, double your pleasure, Wes Aihara in the Honda CRX. Likewise, the next two qualifiers were further back, but within less than a second from each other. Lindsay Akamu in his Porsche headed Ed Kemper in his Mustang.

With the green flag, Scott charged ahead to victory. The race between Mishima and Aihara, and Akamu and Kemper both were more interesting. In the case of both, by the first corner the two slower qualifiers got by their racing partners. In the case of Aihara, he was able to make it stick for about half of the race when his engine began to act up, and he had to let Mishima go by. But Aihara stuck to Mishima the entire rest of the race to finish 4 seconds behind the second place car. Akamu did not wait long to retake his position against Kemper and was able to out brake him at the end of turn one. Shortly thereafter Kemper's clutch pedal broke and that was the end of his day.

With the addition of four new drivers to the Hawaii regional racing scene and some new parity in the closed wheel class, racing at the next event on March 31 should be even better.